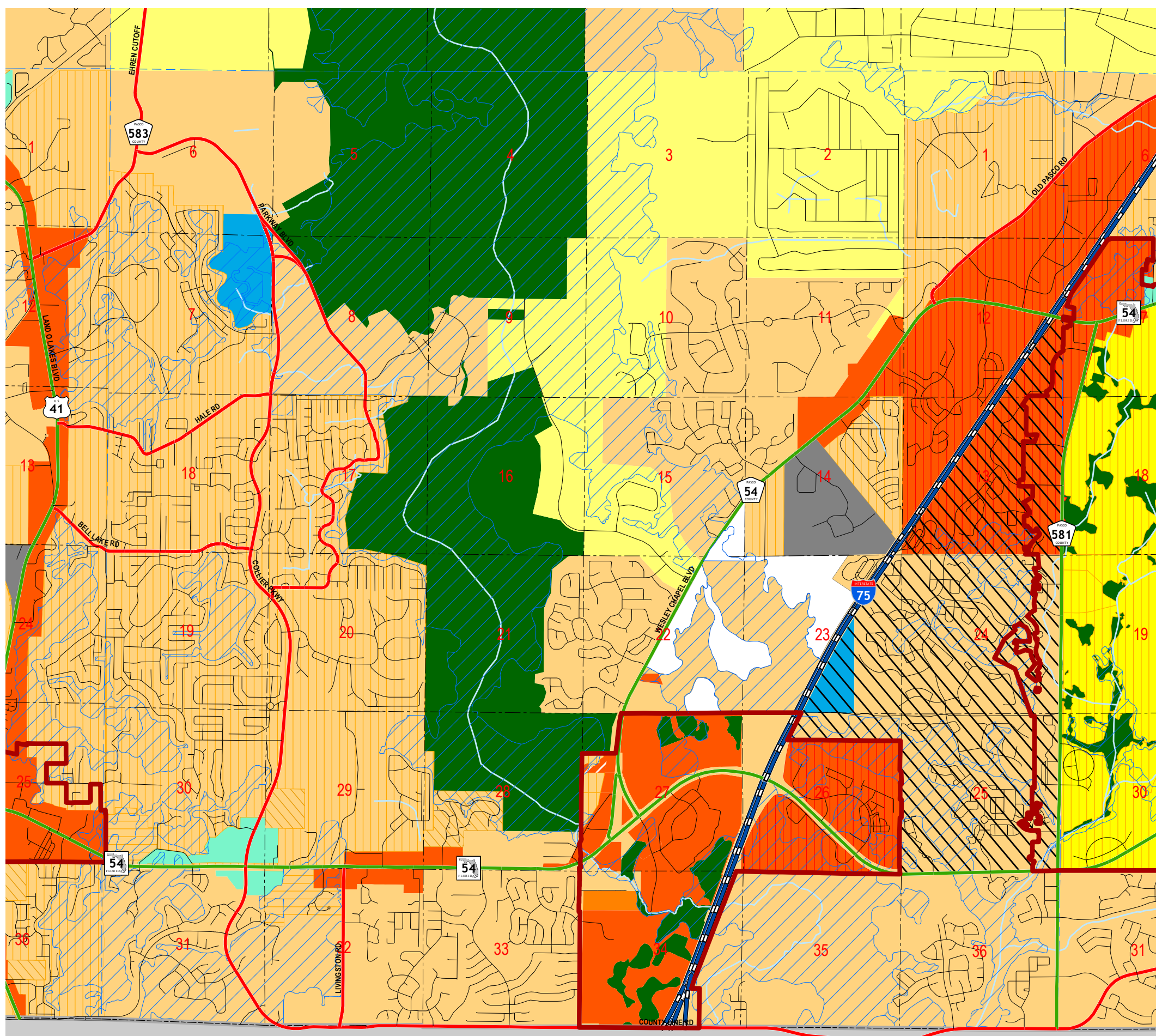


THE COMPREHENSIVE PLAN OF UNINCORPORATED PASCO COUNTY FUTURE LAND USE 2025

T 26 S - R 19 E
SHEET 21

DATE ADOPTED: 06/15/89

ORDINANCE #: 89-13

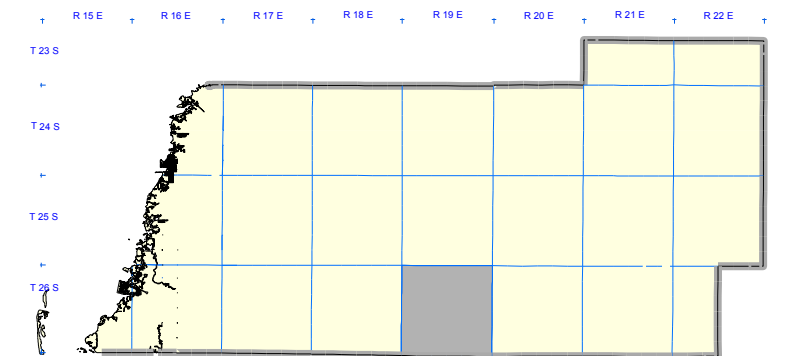


FUTURE LAND USE 2025 CLASSIFICATIONS

- | | | |
|------------------------------------|-----------------------------------|-----------------------------------|
| AG Agricultural | RES - 1 Residential | GH Gateway Hub |
| AG/R Agricultural / Rural. | RES - 3 Residential | NPC New Port Corners |
| C/L Coastal Land | RES - 6 Residential | TC Town Center |
| CON Conservation Land | RES - 9 Residential | OFF Office |
| AT Major Attractors | RES - 12 Residential | EC Employment Center |
| R/OS Major Recreation / Open Space | RES - 24 Residential | ROR Retail / Office / Residential |
| P/S P Major Public / Semi - Public | VMU1 Village Mixed Use - Type 1 | COM Commercial |
| NT New Town | VMU2A Village Mixed Use - Type 2A | IL Industrial - Light |
| PD Planned Development | VMU2B Village Mixed Use - Type 2B | IH Industrial - Heavy |
| MU Mixed Uses | VMU3 Village Mixed Use - Type 3 | |

OVERLAYS

- | | | |
|--------------------------|------------------------|------------------------|
| CLASS I WETLANDS / LAKES | FLEXIBLE PLAN BOUNDARY | PASADENA HILLS OVERLAY |
| CITY LIMITS | ROR OVERLAY | TRANSIT CENTER OVERLAY |



REVISIONS

DATE:	ORDINANCE #	DATE:	ORDINANCE #
04/14/94	// 94-01	12/05/06	// 06-42
04/05/95	// 94-02	01/08/08	// 08-11
08/12/97	// 97-11	08/10/10	// 10-19 TC
08/12/97	// 97-12		
04/07/98	// 98-06		
09/28/99	// 99-15		
06/18/02	// 02-11		
08/20/02	// 02-20SS		
12/17/02	// 02-35		
11/23/04	// 04-52		
12/20/05	// 05-46		
06/27/06	// 06-18		
12/05/06	// 06-40 SS		



Pasco County, Florida
Geographic Information Systems
(G.I.S.)
Engineering Services
Survey Department

Created By: JMH Date Created: February 2013
Checked By: Date Printed: February 2013

HILLSBOROUGH COUNTY