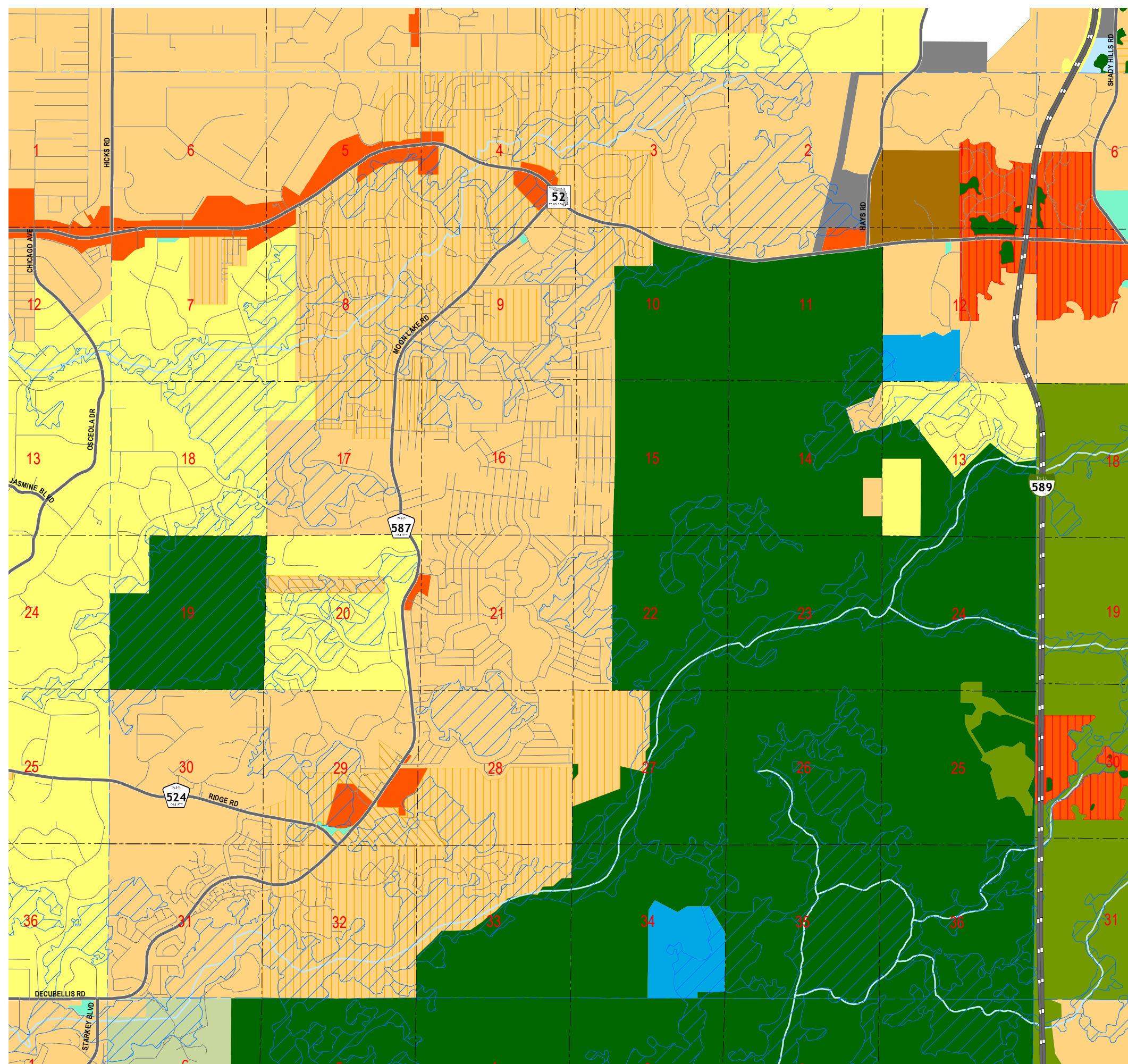


THE COMPREHENSIVE PLAN OF UNINCORPORATED PASCO COUNTY FUTURE LAND USE 2025

T 25 S - R 17 E
SHEET 11

DATE ADOPTED: 06/15/89

ORDINANCE #: 89-13

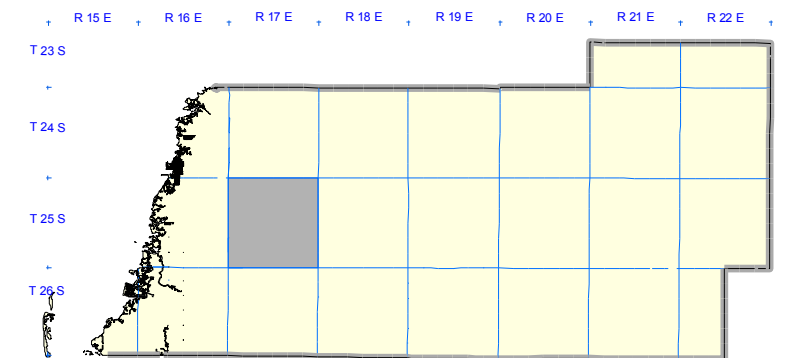


FUTURE LAND USE 2025 CLASSIFICATIONS

- | | | |
|---------------------------------------|--------------------------------------|--------------------------------------|
| AG
Agricultural | RES - 1
Residential | GH
Gateway Hub |
| AG/R
Agricultural / Rural. | RES - 3
Residential | NPC
New Port Corners |
| C/L
Coastal Land | RES - 6
Residential | TC
Town Center |
| CON
Conservation Land | RES - 9
Residential | OFF
Office |
| AT
Major Attractors | RES - 12
Residential | EC
Employment Center |
| R/OS
Major Recreation / Open Space | RES - 24
Residential | ROR
Retail / Office / Residential |
| P/S P
Major Public / Semi - Public | VMU1
Village Mixed Use - Type 1 | COM
Commercial |
| NT
New Town | VMU2A
Village Mixed Use - Type 2A | IL
Industrial - Light |
| PD
Planned Development | VMU2B
Village Mixed Use - Type 2B | IH
Industrial - Heavy |
| MU
Mixed Uses | VMU3
Village Mixed Use - Type 3 | |

OVERLAYS

- | | | |
|--------------------------|------------------------|------------------------|
| CLASS I WETLANDS / LAKES | FLEXIBLE PLAN BOUNDARY | PASADENA HILLS OVERLAY |
| CITY LIMITS | ROR OVERLAY | TRANSIT CENTER OVERLAY |



REVISIONS

ADOPTION DATE // ORDINANCE#	ADOPTION DATE // ORDINANCE#
04/13/93 // AI	09/21/10 // 10-42 SS
04/23/93 // AI	12/20/11 // 11-27 SS
08/12/97 // 97-11	
08/12/97 // 97-12	
07/27/99 // 99-11 SS	
07/27/99 // 99-12 SS	
09/28/99 // 99-22	
08/28/01 // 01-19 SS	
04/27/04 // 04-11	
05/10/05 // 05-16	
12/05/06 // 06-43	
11/20/07 // 07-29 SS	
10/20/09 // 09-18 SS	



Pasco County, Florida
Geographic Information Systems
(G.I.S.)
Engineering Services
Survey Department

Created By: JMH Date Created: March 2012
Checked By: Date Printed: March 2012